



BRENTHAM NEWS

Brentham meets Hampstead

Hampstead Garden Suburb has much in common with Brentham. Our road layouts were designed by the same planners - Barry Parker and Raymond Unwin - and many of the houses in both estates were built by the same Arts & Crafts architects. Both suburbs were also designated conservation areas in 1969. So it was surprising to me that over recent years the Brentham Society has had little contact with our opposite numbers in North London.

In September we set about changing this when we invited the Chief Executive of HGS Trust, Simon Henderson, to the Brentham Club to meet us and discuss common ground and exchange ideas.

One lovely snippet we discovered was that both suburbs incorporate a street with direct line of sight or 'ley line' to the top of Harrow Church. We decided that this was far from a co-incidence but a clever little design feature from the planners.

One area of common ground that was discussed is the challenge of energy conservation in historic properties within conservation areas, and the balance between preservation and adapting for future needs. A topic very relevant today and something the Sustainable Brentham Group have already been addressing.

Along with regular articles in the Brentham News, the

group also offers further practical advice so just email sustainable@brentham.com if you would like to learn more or join their next meeting.

We conducted the Open House Brentham Walks last month over a gloriously sunny late September weekend



▲ Simon Henderson, CEO of Hampstead Garden Suburb Trust shares ideas with the Brentham Society's Jo Bradley and Steve Jenkins

and I would like to thank everyone involved in the organising of these. For any residents who have not joined one of these walks before I really would recommend you try to next year - they are very interesting and informative.

In June we held the annual Strawberry Tea and once again the weather gods looked kindly on us. I would like to thank Diana Hill for hosting the event in her wonderful garden - a thoroughly enjoyable afternoon with residents, councillors, local MPs, delicious cakes and plentiful strawberries in evidence. Diana's garden was also on show during this year's Open Gardens Day.

June reminds me of the Platinum Jubilee weekend and this feels so poignant now with the passing of the Queen. Our new monarch does have a small connection with Brentham though. As HRH Prince of Wales he wrote the forward to our book, *Brentham - A History of the Pioneer Garden Suburb*, and I particularly liked this part: "...today's flourishing neighbourhood community at Brentham is a testament to the vision of the original pioneers and proves the lasting value of careful and creative urban planning and architecture."

Jo Bradley
chair@brentham.com

Film Screening

We are planning to hold a free big-screen viewing of the short film *BRENTHAM FROM ABOVE*, completed earlier this year, which features a unique drone survey capturing a delightful new way of seeing our estate. It will also be an opportunity to join us for a drink and catch up with neighbours.

To assess the best venue for the screening, it would be helpful to know the numbers of residents who would like to attend. If you are interested, please email to dronefilm@brentham.com or contact Tamara on 07703 847303



Open Gardens Day

While the fine front gardens in Brentham can be enjoyed by all who walk down the street, there are some magical back gardens that remain out of sight - except for on Open Gardens Day. This year there were 9 featured gardens. Here are two of them.



Pat Baxendale's garden in Ludlow Road ▲



Diana Hill's garden in Winscombe Crescent ▲



Guided Walks for Open House Weekend

Open House ran over two weekends this year, although the Brentham Society decided to offer guided walks only on the later weekend. They were very successful - with 25 visitors on the Saturday and 24 on the Sunday.

After each walk there was a chance to buy Brentham books, DVDs and other merchandise. Visits to our new archive room at the top of the Club tower were also arranged and for residents, an opportunity to study house plans and other documents in our archive.

◀ Steve Jenkins leads a walk around Brentham

Garden Tips: Hedge Repairs

Our hedges are a vital part of our streetscapes, but they do need maintenance: pruning to stop them blocking pavements and every few years a severe prune to encourage new growth. However, some hedges are lost due to weather conditions, disease (such as honey fungus) or other factors. The winter season is the perfect time to replace the loss.

The most common variety is privet. It is tolerant of most soil types, fast growing and easy to manage if pruned regularly.

When replacing a hedge or part of one, there are two options: potted plants or bare root plants. Autumn is the best time to use potted plants as they have a chance to put their roots down before the winter. They will provide an instant replacement, although they require more soil preparation, diligent watering and are more costly to buy.

As an alternative, bare root plants are dormant, eco-friendly, and economical. Planted between November and April, bare root plants look very much like twigs with a mop of roots, so the hedge will initially appear incomplete. However, you don't need to dig a large

planting hole, and once established they will catch up relatively quickly.

It's useful to establish the causes of your hedge's decline. If you suspect fungal infection, examine the soil at the base of the hedge for any mushrooms, strands of mycelium or a mushroom odour.



If confirmed, you need to remove as much soil as possible and consider replacing with a different variety such as hornbeam, hawthorn, griselinia or yew.

If there is no evidence of fungus infection, you can replace with the same type of plant. Usually, 3-5 plants per metre in a single row is sufficient. Buying smaller plants makes them easier to plant and they are cheaper -

although you will have to wait longer for a final look. More information about hedges can be found on www.brentham.com website under planning, advice and supplementary guidance. More detailed notes on how to maintain your hedges can be found in the February 2014 edition of Brentham News via the archive section on the website.

Gina Jenkins

Summer Front Gardens Award

George Gershwin may have written 'Summertime - and the livin' is easy', but that was wishful thinking for Brentham gardeners. This summer's unusually lovely hot weather and lack of rain brought quite a few challenges.

Despite this, we are happy to announce that the winner of the summer front gardens competition is 26 Fowlers Walk. This front garden is full of carefully selected plants with a great combination of colours and textures of flowers and foliage.

A central container provides long lasting interest of purple Heuchera, Calla lilies and Creeping Jenny (lysimachia nummularia aurea) spilling beautifully over its edge. A few seasonal pots of Geranium and Hydrangea complete the look. A lovely garden.

Thank you to everyone, once again, for keeping our Brentham estate beautiful.

Gina Jenkins



Summer Award Winner: 26 Fowlers Walk ▲



▲ Runner-up: 50 Denison Road

A cornucopia of plants and vegetables in borders and containers with a lovely seating area amidst the vibrancy of colours. We loved the perfect pink splash of the sun umbrella.

▼ Runner-up: 7 Meadvale Road

An excellent variety of perennial plants and lovely hanging baskets framing the front door.



Other runners-up were 14 Denison Road and 46 Meadvale Road.



Runner-up: 8 Woodfield Avenue ▲

A small Edwardian front garden - so simple, yet so stylish. Masses of lavender plants with an olive tree as a centrepiece makes a stunning summer look.

▼ Runner-up: 44 Denison Road

A wonderful display of perennials and roses, which never fails to impress.



Coping in a Climate Crisis

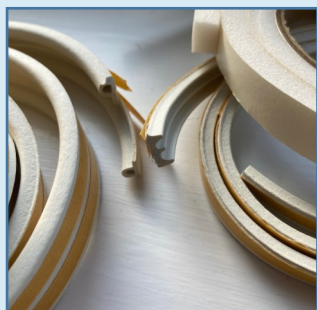
Steve Jenkins

The environment is affecting our lives in more and more ways - from water shortages and hosepipe bans to possible future power cuts.

Rising fuel and other costs of living are exercising most of us as we go into winter with much focus on finding ways to conserve energy. This year's global events have further highlighted the country's dependency on gas as we have seen energy bills soar.

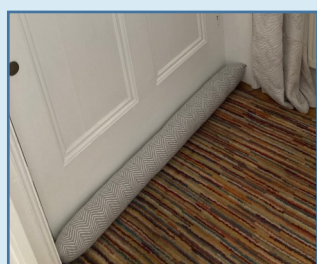
Recently the Brentham Society has convened a Sustainable Group to discuss what will be required as Brentham responds to climate change and there is a gradual shift away from fossil fuels. Among possible measures are new sustainable sources such as heat pumps, which extract heat from the air or the ground.

More immediately, there are simple ways we can save energy. We can turn down the heating thermostat and turn off radiators in rooms that are not used. And we can



tackle draughts. Historic England estimates that, in older heritage buildings, 15-20% of heat is lost in this way.

To locate the source of draughts around doors and windows, use a candle. A flickering flame will quickly tell you where cold air is coming into your home. Then block the gap with self-adhesive waterproof rubber or foam draught excluder strips. They stick on to window frames and provide a tight seal regardless of whether the gap is large or small.



It might seem old-fashioned but placing sausage draught excluders at the bottom of your front and back doors can also significantly reduce heat loss. Going one step further, you could consider adding a thermal curtain to the front door which will provide even more insulation.

The Human Cost

Of course burning ever increasing amounts of fossil fuels doesn't just cost us more, it has an impact on climate too, and many Brentham residents are now understandably concerned about both the immediate and long term future. We spoke to Virginia (Gina) Mallin, our previous chair and a psychotherapist, who believes we can help residents cope with the crisis by working together as a community.

Gina writes:

"Part of tackling the problem is to find ways to manage our personal responses to an unprecedented threat to our way of life, on a practical (which is where the Brentham sustainability group is doing great work) and also an emotional level.

Along with other health professionals, psychotherapists are seeing unprecedented levels of environmental concern and anxiety, especially amongst young people and children.

"It is now irrefutable that the planet is under threat and of course, human beings included. We are in a symbiotic relationship with the environment, as James Lovelock proposed in 1972 with his Gaia principle of interconnectivity and mutual bio-regulation of life on Earth. There are parallels between mental health and Climate Change on a number of different levels. We can think of the planet like a human being. It takes only a few degrees of change in our body temperature or emotional state to reach a tipping point where our systems struggle to cope and we can become seriously ill, physically and also mentally. Both consciously and unconsciously, our nurturing environments, from our families to the entire ecosystem, immeasurably influence us all. Whilst life has always included ups and downs in our daily lives, cases of depression, deep loneliness and self-harming behaviours have been steadily and alarmingly increasing, I believe there's a correlation to Climate Change and I think a lot can be done to address the crisis.

Emotional Tools

"For example, as psychotherapists, we can be proactively equipping people with the tools they need to become more emotionally resilient to cope with the impacts ahead. Whether a sense of powerlessness in the face of global crisis, or a more localised fear of alarming threats to basics such as heating and eating, there are tools and techniques that can help turn a sense of despair or denial into a more positive plan of action. It can be very difficult to actually face the harsh realities of living, but the deepest cost of dissociating ourselves is the risk of losing our own caring capacities, our humanness. It is important to know how to face up to difficult things and to use truth as a catalyst for taking control of our lives.

"One very successful approach I use is Talking Circles. They originated in indigenous tribes to foster understanding between people and to overcome problems. A Talking Circle is a group of people who come together to share their concerns and fears in a safe environment. From a psychological perspective, expressing your fears makes those fears more manageable and accepted.



Gina Mallin

“Doing this in a non-judgemental group gives people the opportunity to share perspectives and become collectively more active. I’ve facilitated a number of Talking Circles where people feel heard, listen to others, and begin to work together more.

“There is lots of frightening evidence from scientists and in the media, reflecting our growing awareness about the impacts of climate breakdown, and all our concerns are tied to the bigger picture which is the health of our

planet. Alongside this rising anxiety, there is a lot of recognition that we all need ways to cope, but there need to be more opportunities for people to discuss their genuine, deep concerns and to work together as a community. I see that as a vital way that everyone can benefit and cope together”.

People are welcome to email me at virginiamallin21@gmail.com or phone me on 07932 784221

Archive News

We are proud of the large collection of historic photographs in the Brentham Archive. They are a valuable record of the early years of our estate. It’s a near comprehensive collection but occasionally we

come across photos we haven’t seen before - like this one of the houses facing Vivian Green. Back then there was no sign of the large oak tree that now dominates the scene.



Electric Vehicle Charging

As the number of electric vehicles grows, the question of how and where to charge them gets ever more important. In areas where most parking is on the street, such as Brentham, roadside charging points (EVCPs) are seen to be at least part of the answer, and our conservation status does not exempt us.

Ealing Council has “an ambitious commitment to create a network of 2,000 on street EVCPs by 2026...

Conservation areas are no exception to the need for public charging facilities.” The charging points being located on pavements are not controlled by the planning system.

Leaflet drop consultations are sent by the council to all residents within 50m of proposed points. I would urge residents to read the leaflet and register either an objection or support. Once past the first stage of approval and yellow planning notices have been put up on lamp posts, there is also a further opportunity to comment. Currently EVCPs are being installed in Woodfield Crescent and are under consultation in Fowlers Walk.

Proposed EVCPs are dark grey and 1.5m high so designed to blend in. However I am not really convinced this will be the case. There are some interesting alternatives to these styles of chargers which would be better

sited to Brentham but Ealing council are not considering these yet until trials elsewhere are completed. Flush pavement EV chargers are on trial in Camden and gully chargers in Oxford. Let’s hope the results of these trials have positive outcomes and we may be able to have unobtrusive charging points within Brentham in the future.



Jo Bradley

Ding Dong Merrily

There’s nothing like a Brentham Christmas for bringing out the musician in us, and in the past we have assembled a group of Carol singers to liven up Brentham streets in the run-up to Christmas. We could revive the tradition if there are enough keen carol singers out there. Enthusiasm matters more than musical ability. Please contact carols@brentham.com if you are interested.



Barbara Murray celebrates her Century



Barbara has lived in the same house in Winscombe Crescent since 1930, and she was a founder member of the Brentham Society. For her 100th birthday the Society presented her with a special commemorative edition of Brentham News.

She writes:

First I must say a big THANK YOU to all the Brenthamites who sent me greetings for my 100th birthday on August 22nd - it was much appreciated - again THANK YOU. We celebrated the occasion with a great day which began with a picnic lunch for 30 family members (they all brought their own lunch) and in the afternoon we were joined by some 40 friends for a



Strawberry Tea and Birthday Cake. The weather was perfect and the sun shone all day. Although I requested NO PRESENTS I was given loads of flowers and eatables which would prove no problem of disposal to my executors!

I Love Volunteering!

Elizabeth (Liz) Rowell, who lives in Neville Road, is one of our vital team of deliverers of Brentham News. But she's recently received an award for a much greater achievement in volunteering - a long service award at Age UK in Ealing. Liz said: "I became a volunteer for Age Concern - as it was then known - when I took early retirement from the BBC in 1998 and wanted to do something helpful. Hard to believe it's now been 24 years!"

At BBC TV Centre, Liz enjoyed a long career as a make-up artist, mostly on drama productions such as *Smiley's People* and *Fortunes of War*, but now she's happy in her second career: "I love volunteering for Age UK Ealing and spending time with all my wonderful friends there".



The Arts Society Lectures are held on the 4th Monday of the month starting at 19.30 at St Barnabas Church Hall, Pitsanger Lane, Ealing W5 1QG.

2022	24 October	Paul Gauguin: Maker of Myth - Sarah Stopford.
	28 November	Underground Cathedrals: the World-class Art, Architecture and Design of the London Underground - Ian Swankie
2023	23 January	Cézanne: Provincial from Provence to Father of Modern Art - Elizabeth Strang (by ZOOM). This lecture ties in with the exhibition at Tate Britain
	27 February	Undressing Antiques: An introduction to buying antiques and integrating and using them in today's homes - Mark Hill (of the Antiques Roadshow).

Non-members are welcome to attend lectures at a cost of £8- cash on the evening or by bank transfer in advance. Please contact Susan Parsons at spsecretarytase@gmail.com

Or you can enjoy 10 lectures every year; annual membership commencing from 1 November is £45 with a £12 joining fee. For more information, contact Romola Boorman at rbtase76@gmail.com

Or see the website: www.theartsocietyealing.org.uk

Brentham Lives

An occasional series about past residents of the estate



When the house at 74 Fowlers Walk changed hands in 1977, the new owner would not have known much, if anything, about the previous owner - a woman who had recently died. In old age she had been thought to be poor and rather reclusive.

But after taking possession of the house and contents, the new resident discovered clues that revealed the old lady had once been a successful woman in the art world. Up in the loft was a portfolio



of drawings and paintings, which turned out to be the work of the once well-regarded artist Florence Briscoe.

Florence was born in Battersea to Edward and Emma Briscoe. They had 4 children who all followed their father into the London print and publishing trade: Herbert as an engraver and fine etcher, Ernest was a successful illustrator, Oliver a compositor and Florence, who was described in the 1911 census as "artist, black and white". At that time the family were living in a four-storey house in Balham that suggests the family made a comfortable living.

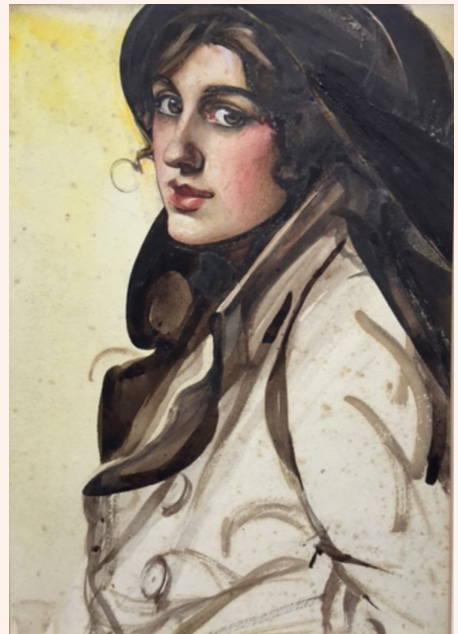
Florence attended Clapham Art School, and she clearly did well as her work was exhibited in South Kensington. During this period, she started to work for THE IDLER, a magazine that provided an opportunity for illustrators to work with the popular writers of the day. Florence is now known for illustrating the CARNAKI stories by William Hope Hodgson. These feature an occult detective whose appearance in her stylish drawings appears to be modelled on the handsome and adventurous author who was killed at Ypres. It has been suggested that many of the female characters were modelled on herself as they all have the same dark eyed beauty. No photo exists but, as she is remembered in old age as having a rather exotic look, this is possible.

William Hope Hodgson's work was largely forgotten except by those interested in horror and occult fiction. However, a recent revival has seen a story by the fantasy writer James Bojaciuk that features Florence Briscoe as a character in an alternative universe. (*City of the Saved - Stranger Tales of the City* edit. Liz Evershed)

We know little of Florence's life although it is tempting to conjecture adventures for a young

woman who was active in the London artistic and publishing circles at the turn of the century.

She moved to Brentham in 1932 and in 1939 she was described as a commercial artist in the civil registration list, so it seems she was still working during some of her years in Brentham. At the end of her life, she appeared withdrawn and a little eccentric. A neighbour described her picking flowers from nearby gardens which then appeared in a jam jar on her front window sill.



When after her death the buyer of her house and contents found the portfolio in the loft, several of the beautiful etchings and watercolours were donated to raise funds for the Brentham book. Some are still in the estate today; so together with her appearance in fantasy fiction, Florence is not forgotten.

You can read the full story of the discovery of Florence Briscoe's legacy at www.brentham.com Look under Archive/Brentham Lives.

Pat Baxendale



020 8992 5661 • www.grimshawhomes.co.uk



We have been selling property on the Brentham Garden Estate for over 50 years and have a wealth of experience and knowledge of the area. If you are considering a sale, contact Derek Grimshaw and his team to arrange a free, no obligation appraisal on your property.

The Brentham Club

TENNIS, CRICKET, FOOTBALL, BOWLS, SNOOKER, DARTS & BRIDGE



SPORTS AND SOCIAL ACTIVITIES FOR EVERYONE

- Join today and become part of the wider Brentham community. Enjoy discounted prices on food, drink and special events
- Great venue/room hire for birthday and anniversary parties, as well as weddings
- Licensed to hold weddings and civil ceremonies

TOP BAR AND BALCONY

Monday-Friday: 5.00pm–11.00pm

Saturday: 12.00pm–11.00pm

Sunday: 12.00pm–10.00pm

THE FRED PERRY CAFÉ

Monday-Friday: 10.00am–4.30pm

Saturday & Sunday: 10.00am–2.00pm

Everyone welcome, members and non-members

WHAT'S ON - AT A GLANCE

Friday 21st October– **Literary Night**

Friday 28th October– **Cricket Quiz Night**

Saturday 5th November – **Fireworks Night**

Friday 18th November – **Comedy Night**

Saturday 17 December - **Beatles Tribute Band**



Trash & Treasure Street Food Markets 5.00pm - 9.00pm

Friday 14 October

Friday 11 November

Friday 9 December (with Christmas Market)

Trash & Treasure Artisan/Vintage Markets 11.00am-4.00pm

Sunday 30 October

Sunday 27 November

For more details on all events, see website:

www.brenthamclub.co.uk

For general enquiries:

email manager@brenthamclub.co.uk

Published by The Brentham Society www.brentham.com

Printed by Colormax West Ealing W13 0SR

You can contribute to *Brentham News* by emailing news@brentham.com

The next edition is due out in February 2023

